



# G · C · H · N · A

## Greater Cement Hill Neighborhood Association

For Ferrellgas  
Discount,  
Remember To  
Renew Your  
GCHNA  
Membership

## SPRING 2011 NEWSLETTER

for PDF file copies of our newsletter go to [www.gchna.com](http://www.gchna.com)



GCHNA members collaborating with Nevada County official, Tom Coburn, for a Gala Opening of the Coyote Park Complex (behind the library) on September 18, 2011. Save The Date.

### GCHNA Spring Event

Before fire season starts, GCHNA is partnering with the Fire Safe Council to offer Defensible Space Advisory Training. Come and join us.

**Why** – To educate home and landowners on how to protect themselves and their neighbors.

To reduce the devastating consequences of a wildland fire in our sphere of influence.

Possible first step in becoming a Firewise Community

**What do we gain?** – Everything, especially when suggestions are implemented, Peace of Mind!

**When** – Possible dates - 2 mornings – May 2nd & 3rd

**Where** – NCCFD Station #84's Training Room on Coyote Street, Nevada City and field visits by teams to 2 participating local homes. (One home still needed.)

Cost – Free with complimentary lunch  
RSVP – 265-6540 or 265-9746

### What's Inside

2. Reawakening A Silent Song
3. Hirschman's Trail Project
3. Update on The Courthouse
4. Nevada City Gains Title to Sugarloaf
4. Weather with a Local Twist
5. Ferrellgas Update
5. GCHNA 2011 Budget
6. Membership Renewal For 2011
6. Current 2011 GCHNA Members
7. Neighborhood Representatives
8. Membership Guidelines
8. Who to Contact

### HERE'S the Deal ..

By Jeanette Clark

So do you wanna save a "buck" or two? There are two "if's"...IF your property has been recently reassessed by the Assessor's office and has a lower rate due to the reassessment AND IF your home is mortgaged and property taxes, etc., are held in escrow for payment to the county, you MAY be eligible for a refund of the difference of the escrow held tax money not distributed. Check your 2009, 2010, and current secured property tax bills to determine if there is a difference. The deal is that the property owner has to make an inquiry to the mortgage-escrow holder to request a refund.



*Continued on page 2*

**GCHNA Mission - To protect and preserve the rural qualities of our neighborhood by providing a forum for group action as needed.**

Also, now is the time to save even bigger "bucks." If you, as a property owner, wishes to clear your property of combustible fuels, the Natural Resource Conservation District (113 Presley-Suite 1, Grass Valley) may have grant money to help you with your project. Talk with Mr. Tony Sunseri who is the contact for the "reforestation" projects.

#### **And, now for the NEWS!**

■ **FREE Defensible Space Training** is being provided by the Fire Safe Council of Nevada County. May 2 & 3. Monday and Tuesday morning sessions. 1st day - information and instruction on what to look for with a free HOT lunch. 2nd day - practicum in the field looking at a volunteer site.

■ **Firewise Community assessment** is being provided by the Fire Safe Council of Nevada County. This is a necessary noninvasive inspection of our neighborhood so GCHNA can draw up a plan of action in order to achieve our certification as being a Firewise Community and be ready in case of a wildfire event. We MAY be able to attain this certification by our annual road picnic in September.

■ **CBDG News** – Sean Donovan, Secretary of HUD, (Washington D.C.) and his crew are finalizing the review for a waiver in order to fund Nevada County's CFD #007-1 a tax assistance grant for low income families. Nate Beason, Jory Steward, Eve Diamond, and Kyle Thompson have been keeping GCHNA in the loop when new information comes down the "pike."

■ **NID and GCHNA** will be hosting a CFD informational meeting in May.

■ **CFD #0007-1 Pending "Ribbon Cutting Celebration"** in August/September announcing the completion of the NID's Cement Hill Pipeline Project. This may be in conjunction with the annual picnic. Stay tuned.

■ **Annual picnic** is scheduled to be held at Tobiasson Park (known to the locals as Coyote Park) just above the Madelyn Helling Library. This will be a collaborative effort between Nevada County and GCHNA. There will be historical commentaries, walking tours, volley ball games, refreshments, live music, Firewise training with Joanne Drummond, exhibits, and loads of fun.

So, what's new with you? If you are bored, come join us. If you are hyperactive, come join us. If you have a passion to serve our neighborhood, come join us. We are in need of a Vice President, Corresponding Secretary, and neighborhood representatives for Crystal View Heights, Lower Cement Hill, and Southside Cement Hill. Come and join us....one and one-half hours a month and perhaps volunteering for a project/activity that you would enjoy doing. Help us maintain our mission goal "to protect and preserve the rural qualities of our neighborhood by providing a forum for group action as needed."

---

### **Reawakening A Silent Song**

Those of you who attended the GCHNA annual picnic in September will remember the ceremony welcoming descendants of the local Nisenan community home to Cement Hill and the presentation by representatives of the tribe. Shelly Covert sang a lovely traditional song to begin the presentation.

Judith Lowry, who is the director of California Heritage Indigenous Research Project in Nevada City and attended the picnic, wrote an article for the magazine "News from Native California" in which she explains how traditional Nisenan songs are gifted from one generation to the next and that these songs can be sung by only those who the elders feel are wor-

thy. Judith recounts Shelly's preparation for her singing at the picnic in an excerpt from the article reprinted below.

"Shelly Covert could feel the eyes of her entire family upon her. She knew in a moment that a duty had been thrust upon her, an honor for which she felt woefully unprepared. After all, she had been a musician most of her life, the embodiment of her family's musical talent. But that was rock and roll! How could she find a way to sing these ancient songs when her talents had always had her belting out big notes to the fat sounds of screaming guitars, driving drums, and crashing cymbals, all amplified? She and her bands had faced big audiences before, too, but this new responsibility, not merely to deliver a good time but to uphold something precious and rare and very sacred, and with nothing for accompaniment but a small deer hoof rattle, was daunting.

Because of her respect for her culture, taught to her by her family, she knew that although she could learn the songs on her own, from recordings, she needed to consult Rose Kelly-Enos, Lizzie's daughter-in-law, a noted California elder and tribal ceremonialist in her own right. Rose resides in Clipper Gap, where she has preserved her people's dances and songs for several decades.

Shelly made the trip down to speak with her. Rose was very helpful. She cautioned against allowing the songs to be recorded, as they were special gifts. "They are for your use only," she told Shelly and her daughter, Rena, who would be helping her mother practice the songs. One song in particular would be their focus, the song dedicated to the Sutter Buttes, or Histum Yani, as they were known to the Nisenan people. This song, dreamt into being by Jane Lewis, carried the people's requests for good fortune to the buttes. Shelly wanted to be worthy of the passage of this song from Jane to Lizzie to Rose and now

*Continued on Page 3*





to herself, in order to make certain she conveyed the spirit of the song properly. For this, she would have to visit the site of the gathering beforehand, so that she could see and know the place where she would offer her song.

Her mother, Ginger, drove her up to the Cement Hill area on a winding road that boasts many spectacular views for the owners of the elegant homes of the neighborhood. As the car came to the top of the hill, Shelly suddenly beheld a sight that caused her heart to leap. It was the Sutter Buttes, but as she had never seen them before.

Most of us from the foothills see the buttes in the distance as we traverse our way down to Marysville or Chico. They rise unexpectedly and dramatically from the valley floor. Such geological features have always captured human imagination. This one is no exception, with its air of grandeur and mystery. Viewing them from this new perspective, with the buttes seeming so close, so intimate to the

ground she now stood upon, Shelly understood immediately why her ancestors felt such a profound spiritual bond with this enigmatic landmark. She felt the song call to her and she knew then that she would be able to sing it with confidence. On the day of the gathering Shelly's eyes searched the horizon for the Histum Yani, as one might look for the face of a supportive friend in the audience for whom one is about to perform. For the tiniest moment in the capricious autumn weather, the buttes revealed themselves through the clouds and light sprinkling of rain and filled the singer's heart. When the time came, she rose and sang, softly at first, carefully feeling her way. She sang to the Histum Yani, in the presence of her family and the people who had gathered to honor her tribe's heritage. As she sang for the good fortune of her people and the gratitude they felt for the blessings of life, and really feeling it in her heart, her voice grew stronger, clearer, and more joyful. The Histum Yani and the skies above once again echoed with the sweet and reverent refrains of a dream song, long silent, now reborn. And the ancestors smiled."

Reprinted from the article "Reawakening a Silent Song", by Judith Lowry. From "News from Native California", Vol. 24, Number 2, Winter 2010/11, published by Heyday Books.



Shelly Covert is a matriarch in a four-generation household and the secretary of the Nevada City Rancheria.

## **Hirschman's Trail Project**

*by Bill Haire, Nevada County Land Trust*

The Hirschman's Trail Project is awaiting dryer ground conditions. The City did put out a Request for Proposal for interpretive signs to go along the trail between Cement Hill Road and the pond. We are working on the details for the trestle to be built over the big ravine near the house. The contractor for the trail construction is waiting for a start work order from the City. The way the weather is going, though, he will not be starting until sometime in May - maybe later.



Sierra Iris.



Hirschman's Pond.

---

## **Update on Courthouse..**

The corner of Cement Hill and Hwy 49 is the second choice of the Administrative Office of the Courts (AOC), as they seek to replace our existing courthouse. The first choice is to build an entirely new building at the present location being sensitive to the downtown's historic archi-

tecture. To learn more, go to that AOC's web site for this:

<<http://www.courts.ca.gov/2828>.



## Nevada City Gains Title to Sugarloaf

By Editing Staff

Have you viewed Nevada City from the top of Sugarloaf? Sugarloaf, which is accessed from the junction of North Bloomfield and Coyote Street, is the 32 acre backdrop to our beautiful town and an asset to our neighborhood. Now it will be protected forever and the magnificent 360 degree view of Nevada City and its surroundings will be available for all to enjoy,

Charles Woods, one of the co-founders of Friends of Sugarloaf, expressed his feelings about Sugarloaf in the letter below. He wrote to urge the City Council to stay the course as negotiations were getting tough. Charles was an important part of Nevada City's preservation era. He passed away on January 20. Sugarloaf meant a lot to him.

Dear Friends,  
Sugar Loaf, the prominent, high open landscape directly north of Nevada City has always been the symbolic and actual backdrop of our small city -- in all its manifestations. It is the visual and spatial landmark that defines Nevada City's unique place in the region. Before the town, before Nevada County, before the

Gold Rush, before the advent of man on the planet, Sugar Loaf has stood as a sentinel, quiet, uninterrupted, both powerful and serene. Its significance must be confirmed and memorialized as the integral, uninterrupted open space that defines Nevada City's special character. I have been a resident of Nevada City for over fifty years and a serious advocate of preservation. I urge the city's acquisition of Sugar Loaf.

Sincerely yours,  
Charles Woods  
7/14/10

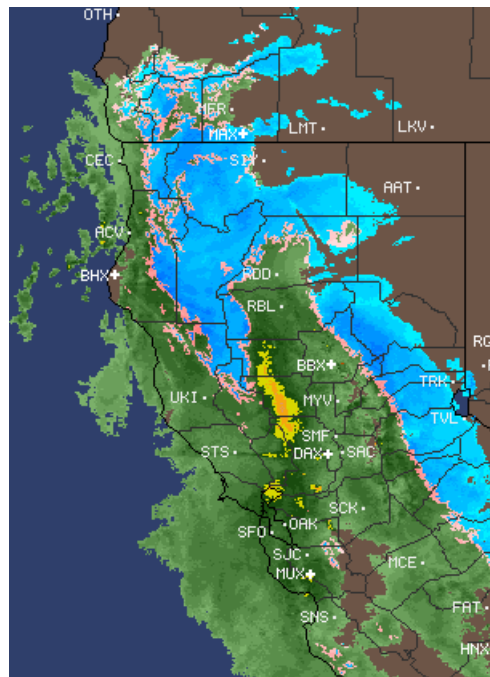
## Weather with a Local Twist

By Susan Wiesner

While Nevada County residents often look for the "LOCAL" label associated with food and other products, residents of Cement Hill have another very LOCAL service available – provided on a personal level by one of our neighbors. Andy Peterman offers all kinds of current weather condition information through his [weather station](#) on Cement Hill. Those who are weather junkies may have already stumbled onto this internet offering through the Weather Underground website [www.wunderground.com](#) (KCA-NEVAD19) providing current weather conditions for worldwide locations. Even more local weather data can be accessed directly through Andy's own website [www.treehouse.org/weather](#).

Andy has been monitoring local weather for over eight years and set up his equipment here six years ago when he and Michele moved to Cement Hill. The many micro climates in this area make it very helpful to have the exact data for our ridge. Andy cautions that his property is on a south slope so the sun tends to warm the ambient temperature more than other nearby properties with a north exposure. Therefore, his daytime temperature readings may be slightly above others in the area.

However, the accuracy of his current condition information is much closer to reality here at the 2800' elevation than the Blue Canyon data, which several other weather services use for Nevada City or the 95959 zip code. The forecast data for the Weather Underground site does not come directly from Andy's station but comes from the National Weather Service and possibly other sources. A similar Weather Underground station is located at Lake Vera (elevation 2650') for those who may be closer to that location and elevation. It also provides a forecast as well as current air quality and pollen index information. And finally, an excellent website for weather forecasting with a visual satellite map of the current weather is the National Weather Service Forecast Office for the Western Region, [www.wrh.noaa.gov/sto](#). One may click on "satellite imagery" or "forecast weather tables" and see both visual and detailed information about the weather for your specific area and elevation. So have fun and explore some new sites.



Sugar Loaf Mountain.



## Ferrellgas Update

By Larry Cook

I have been attempting to gather information from Ferrellgas to clarify our position with them. Our contract expires in December. I would like to share some general information with you.

### Please note:

1. We have a contract rate of 43 cents over "rack rate". This rack rate is very difficult to track down at times. Hopefully, I will be receiving and sharing a weekly rack rate out of the Bay Area with you in the near future. This will help us to explain our rates, and track them as well. Alta Sierra also has a rate of 43 cents BUT we

are charged an additional hidden "freight" rate of 9-12 cents.

You should be being charged \$35.00 per tank as a rental fee, not \$45.00 as some of us have been. You can request a refund from Ferrellgas if you have the proper records to document this. If you own your tank, you should not be charged a rental fee.

If you opt for "call only as needed" service, you are subject to "haz-mat" fees etc. Extra fees are not normally charged if you allow them to refill "at will". This has been a hazy area to be addressed with our next contract.

If you sign up a new customer for Ferrell-

gas, you are eligible for a \$50-100 credit, but again this has been inconsistent. I have been instructed by the regional manager that they normally do not enforce the minimum usage clause to determine our rates for individuals on the "call as needed" system. Again this has been confusing.

DO PAY your dues on time as this determines your eligibility for the Association's established rate and benefits. We turn in the list in May of each year. Again, billing and normal communication must be done with the local office in Nevada City. I may or may not be able to help with special problems.

Larry Cook 530-265-3088

## GCHNA 2011 BUDGET APPROVED

The 2011 Budget was submitted by Treasurer Susan Wiesner and promptly approved by the Steering Committee on February 7<sup>th</sup>. 2010 results show expenses exceeded income by only \$163 and were easily covered by our strong reserve position of \$7,280 in the General Fund as of 12/31/2010.

### GREATER CEMENT HILL NEIGHBORHOOD ASSOCIATION 2011 BUDGET AND 2010 ACTUAL

|   | APPROVED<br>2011 BUDGET | 2010 BUDGET | 2010 ACTUAL |
|---|-------------------------|-------------|-------------|
| <b>Income:</b>                          |                         |             |             |
| Membership                              | \$ 4,600.00             | \$ 4,400.00 | \$ 4,825.00 |
| Interest, other income                  | \$ -                    | \$ -        | \$ 29.00    |
| Donations (possibly from Ferrellgas)    | \$ 200.00               | \$ 400.00   | \$ 458.00   |
| Total Income:                           | \$ 4,800.00             | \$ 4,800.00 | \$ 5,312.00 |
| <b>Expenses:</b>                        |                         |             |             |
| Picnic (incl. gifts & honorariums)      | \$ 1,600.00             | \$ 1,990.00 | \$ 1,490.00 |
| Spring Event                            | \$ 230.00               | \$ 200.00   | \$ 184.00   |
| Three Newsletters (including postage)   | \$ 2,100.00             | \$ 2,100.00 | \$ 1,938.00 |
| Meeting Room Annual Rent                | \$ 150.00               | \$ 150.00   | \$ 165.00   |
| Memberships (FONA, Land Trust)          | \$ 150.00               | \$ 50.00    | \$ 150.00   |
| P.O. Box Rent & misc postage            | \$ 70.00                | \$ 145.00   | \$ 61.00    |
| Consulting - Legal and other            | \$ 200.00               | \$ 155.00   | \$ 466.00   |
| Misc: Other Events, web site, Mtg pkcts | \$ 300.00               | \$ 10.00    | \$ 1,021.00 |
| Total Expenses:                         | \$ 4,800.00             | \$ 4,800.00 | \$ 5,475.00 |





# Are You On Our List? GCHNA Membership Renewal Reminder

By Eve Collins, Membership Chair

Thank you to the many members who have renewed their membership for the 2011 year. Please check our list in this newsletter for our current 2011 paid memberships to see if you paid this year's dues. Call the Membership Chair, Eve Collins if you have any questions. 265-6540.

Remember, the grace period is over on May 1st. After that date, if you need a fill up with Ferrellgas propane, and your membership has lapsed, you must contact Ferrellgas as they are not bound by contract to give the discount rate to non- members. You can in fact, renew your membership anytime during the year.

As always, membership opportunities include: meeting your neighbors; attending open Steering Committee meetings where you are encouraged to voice your concerns; getting information and representation about issues that may affect our neighborhood; getting a great rate with Ferrellgas; and attending neighborhood events (Spring Event and the Annual Neighborhood Family Picnic).

Again, remember the grace period is May 1st. So, please fill out the membership form in this newsletter or use the form available on our website – [www.gchna.com](http://www.gchna.com) – and mail it with your check for \$20 to GCHNA P.O. Box 1343, Nevada City, CA 95959, by May 1st. Thank you so much for your support this past year and we look forward to your continued support in 2011.

## Current 2011 GCHNA Members

Scott & Karen Adams  
Marge Addleman  
Richard & Catherine Alderman  
Ron & Judy Anderson  
Chip & Peggy Arenchild  
Ed Arnett  
Marty Austin  
Luci Baker  
Christy Barden  
Eileen Blodgett  
Molly Breen & Mike McRae  
Brian & Jennifer Breiling  
Ken and Joanne Brown  
Elke & Alastair Brown  
Willie & Sue Brusin  
Brian & Ruthanne Buckley  
Fred & Margie Buhler  
Mike, Karen, Shannon & Amber Busse  
Jon Byerrum & Holly Hermansen  
Stan & Linda Byrne  
Chip Carman & John Paul  
Jill Caruthers & Jon Fox  
Denis & Jennifer Cebollero  
Ernest & Linda Chiappari  
John & Lisa Christensen  
Gordon & Jeanette Clark  
George Cloud  
Doug & Eve Collins  
Glen Cooley  
William & Susan Copeland  
Diana Soldavini-Coronel  
Robert Crawford  
Charles & Nancy Creech  
Dale Tom & Sandy Creighton  
Larry & Mary Anne Dulmage  
Tom Dunham & Terri Beedle  
Doug & Caryl Fairfull  
Greg & Susan Fenner  
Diane Fetterly  
Jack & Patti Foster  
Gary & Cathy Fouyer

Kate Frame  
Frank & Fran Francis  
Gary & Carole Gibson  
Michele Furtado & Andy Peterman  
Dave & Kathy Giguere  
Gary & Nancy Goerz  
Jeff & Anna Gold  
Henry Goodman & Susan Jakubik  
Clark & Fran Gordon  
Harold & Patricia Graves  
Bill & Linda Greig  
Edward Guinaugh & Caroline Desmares  
Barbara Hagan  
Alan Haight & Jo McProud  
Carolyn L. Hardy  
Jon & Ann Heinrich  
Howard & Jill Hersh  
Richard & Susanne Hinman  
Bill Holman  
William & Mijo Horwich  
Bob & Cindy Hren  
Terry & Courtney Hundemer  
Charles J. Hurst  
Jean Gilbert & Sylvia Jensen  
Betty Johnson  
Ralph & Michele Joiner  
Brett & Louis Jones & Barbara Hall  
Steven Jones & Liz Meyers  
Paul & Eileen Jorgensen  
Frank Joyal  
Kevin & Lisa K  
Rick & Elizabeth Kalb  
Kevin & Ricki Kartes  
Tom & Kathleen Kelly  
David Kyle & Patt Lind-Kyle  
Ellen Laird  
Suesan & Jeff Larsen  
Stan & Donna Levin  
Steve & Sheryl Levy  
Ralph & Gila Libet  
Jenelle (Jeep) Lindsay

David & Lorraine Livingston  
Art Lynn  
Henry & Arabella Macias  
Ken Macklin & Marla Charbonneau  
Lin Donald & Tom Manuel  
Debra Martin  
Dennis & Penny Matthews  
Chuck Mattison  
Gardiner McCauley  
Rod & Marjorie McConnell  
Jim McCraney  
Helen McDonald  
Julie & Jay McEnroe  
Tom & Cara Meinholz  
James & Sherry Miller  
John Morales  
Scott Muir & Julie Poulton  
Joan Regal & Steve Myers  
Teresa Naleway, June DuPee, Laura DuPee  
Mike & LaVeta Nevius  
Jim & Janice O'Brien  
Alberta Oates  
Marcella Oglesby  
Derek and Maureen Olsen  
Chris, Kyle and Ryan Owen  
David Painter & Sharon Winegar  
Laura, Bill & Zephur Pappani  
Denis & Nancy Paulson  
Marty Pezzaglia  
Charles & Julieta Phillips  
Carl & Joyce Plaza  
Randi Pratini  
Robert & Ruth Racine  
Saul Rayo & Elena Powell  
George & Jo Ann Rebane  
Anthony & Jacki Kay Richards  
Lowell & Diane Robertson  
Dee & Dan Rodriguez  
Karen Rynberg  
Shelley & Eligio Salvatore  
Chuck & Janice Schretenthaler

Tom & Joan Seabury  
Tim & Candace Segale  
Judy Shillinger  
Richard & Cherie Simpson  
Lew & Eddy Sitzer  
Carson & Miriam Skaggs  
Marilyn Smith  
Lisa Stine  
Tom Stone  
Norman & Beverly Stout  
Rick & Mary Street  
Joel & Rita Sweet  
Steve & Edyann Switzer  
Michael J. Taylor  
Richard & Theresa Thomas  
Randy & Nahid Thompson  
Jeffrey & Sue Thomsen  
Marilyn Rohrbacher & Jim Thornton  
John & Bonnie Torres  
Gerda & Juergen Traub  
Robert Trent  
Paul & Mary Trethewey  
Patrick & Gerry Tribble  
Dennis & Yuko Tucker  
Patrick & Theresa Wagner  
Jack & Debbie Wandro  
Don & Louise Warner  
Alexandra & Gerhardt Wassermann  
Alan Weisberg & Susan Gregory  
Jack & Michele White  
Kevin & Sharon Whitlock  
Ted Smith & Susan Wiesner  
Robert & Susan Willour  
Susan Wilson  
Edward & Karen Wright  
David & Joyce Yaksick  
David & Shirley Yeager  
John Zakoian  
Michael & Jill Zan



**Join GCHNA or Renew Your Membership** (check your membership status at [www.gchna.com/membership](http://www.gchna.com/membership))

If you haven't joined or renewed your membership to GCHNA, we hope you will do so now.

Here's my \$20 GCHNA membership fee for 2011. Enclosed is a check made out to GCHNA.

NAME(s) \_\_\_\_\_

ADDRESS \_\_\_\_\_

TELEPHONE \_\_\_\_\_ FAX \_\_\_\_\_

EMAIL \_\_\_\_\_

Mail check & form to: GCHNA, PO Box 1343, Nevada City, CA 95959 ☐ E-mailed (PDF) newsletter preferred



**GCHNA Neighborhood Representatives**

**West End Cement Hill**

*West end of Cement Hill Road, including Sunshadow Circle, Cedar Song Road, and Garesio Ranch Road.*

Ellen Hagan, Tim Hagan, (timhagan@oro.net) 265-9746

**Applewood Lane**

*Applewood Lane, including Indian Shack Road.*

Larry Cook, (2cooks@att.net) 265-3088

**Gochine Drive**

*Gochine, including Mt. Auburn Circle.*

Carl Plaza, (plaza@ncws.com) 478-1802

**Upper Cement Hill**

*Upper Cement Hill Road, including Pine Tree Place, Diamond Oak Drive, Bodie Ridge Road, Skyranche Road, and Elysian Way.*

Willie Brusin, (wbrusin@att.net) 265-4018

**Sunrock Road**

*Sunrock Road.*

Susan Wiesner, (sawiesner@gmail.com), 265-4824

**Augustine Road / Excelsior Ditch Camp Road**

*Augustine Road, including Daisy Blue Mine, Leisure Lane, Lazy Oaks Drive, and Excelsior Ditch.*

Marty Pezzaglia, (martypezzaglia@spiralemail.com) 265-3288

**Crystal View Heights**

*Crystal View, including Golden Oaks.*

**(Open)**

**Central Cement Hill Road**

*Central Cement Hill Road, including Whispering Oaks, Merryhill Way, Gold Court, Spanish Quartz, Ragon Road, and Fox Hill Road.*

Jeanette Clark, (cementhill@aol.com) 265-2680

**Lower Cement Hill Road**

*Lower Cement Hill Road, including West Piper, Deer Crest, Rancheria Court, Red Hill Road, Foster Driveway, Picton, Picton Way, and Foster Road.*

Glen Cooley 265-4025

**Indian Flat Road**

*Indian Flat Road, including Country Circle and Robinson King Road.*

Eileen Jorgensen, (eileen@themagiccarpet.biz) 265-6415

**Southside Cement Hill**

*Highway 49, including Columbine Court, Delphine Lane, Shoshoni Trail, Old Faithful Court, Carli Way, Crooked Arrow Lane, John Barleycorn Rd., Frost Court and Cavanaugh Lane.*

(open)

**Wet Hill Road**

*Wet Hill Road, including Sierra Springs Circle, Lower North Bloomfield Road, and Elliot Way.*

Nancy Paulson, (npaulson@nccn.net) 265-5919

**Airport Road**

*Airport Road, including Tower Hill Road, West Airport Road, East Piper Lane, and Sheriff Road.*

Scott Adams, (sadams1635@sbcglobal.net) 470-0273

**At Large**

Eve Collins, (collins@theunion.net) 265-6540

Bill Holman (bholman@succeed.net) 265-8387

Uli Paulin, (upaulin@ttz.com) 265-4194





# G · C · H · N · A Greater Cement Hill Neighborhood Association

*Member of Non-Profit . Federation of Neighborhood Associations*  
228 Commercial Street, #277, Nevada City, CA 95959

NON-PROFIT ORG.  
US POSTAGE  
PAID  
PERMIT NO. 68  
NEVADA CITY, CA

---

## SPRING 2011 NEWSLETTER

---

### **Who to Contact...**

#### **Membership Information**

Eve Collins – 265-6540

#### **Ferrellgas Information**

Customer Service – 265-5896

Larry Cook 265-3088

#### **The Fire Safe Council**

Joanne Drummond - 272-1122

#### **Bear or Mountain Lion Problems**

USDA Trapper Larry Lane

(916) 239-8978

#### **NID Web Site**

Doug Roderick 271-6866

[www.nidcementhill.com](http://www.nidcementhill.com), regarding  
treated water pipeline

[www.marquespipeline.com/  
cementhill/](http://www.marquespipeline.com/cementhill/)

#### **FONA Web Site**

[www.fona-nevco.org](http://www.fona-nevco.org)

### **GCHNA Mission Statement**

The Greater Cement Hill  
Neighborhood Association is  
chartered to:

- Protect and preserve the rural qualities of our neighborhood by providing a forum for group action as needed.
- Communicate information quickly and efficiently about matters of neighborhood interest to its members and associates.
- Raise funds and supply volunteer labor for projects that enhance or improve our neighborhood.
- Be an organization through which our neighbors can meet and get to know each other in meetings and social gatherings.

### **Membership Guidelines**

Fiscal Period is

January 1<sup>st</sup> – December 31<sup>st</sup>

**Membership Dues due by**

February 1<sup>st</sup> Grace period to May 1<sup>st</sup>

Anyone may join anytime during the year but will have to negotiate with Ferrellgas if joining after May 1<sup>st</sup>.

#### **Newsletter Contributors**

*Editors:* Ellen Hagan

*Design & Layout:* Bill Holman

*Copy Editor:* Eve Collins &

Eileen Jorgensen

*And a big thanks to all our writers  
and photographers.*

